

SAP LIQUID STUDIO FOR LEONARDO APPLICATION: SMART FLEET

Your digital service management dashboard

Function: Asset Maintenance | Process: Asset Management | Industry: Products

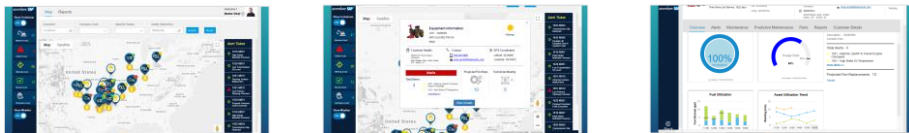
Application Overview

Smart Fleet is a fleet management dashboard that provides a consolidated view of location, alert status and work orders associated with a fleet of heavy equipment. The application integrates real-time equipment data from Internet of Things (IoT) sensors and SAP master and transactional data into a single interactive map for the user.

Using the power of SAP Leonardo Predictive Analytics, the application also provides the ability to predict future failures or preventative repairs that can be done before the equipment even goes offline. Using geospatial location sensing, the manager has a view of nearby technicians and can easily dispatch new work orders to address identified or anticipated maintenance issues.

Solution

This SAP Cloud Platform-based application allows a service manager to track a fleet's health, enables seamless interaction with back-end systems as well as other data sources, and opens new opportunities to develop and enrich the customer service experience.



Business Value

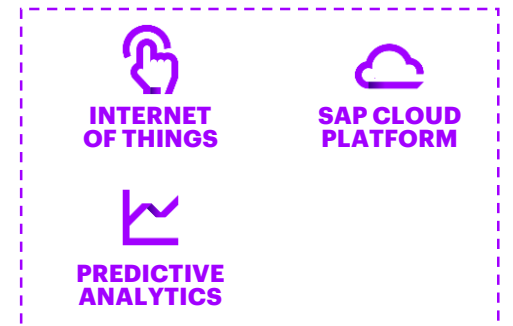
- Reduces equipment downtime through real-time alerts and predictive maintenance.
- Provides the ability to minimize service visits by grouping maintenance activities.
- Provides recommendations on additional or preventative services to reduce risk of additional future downtime.

Features

- Real-time view of location of machines and technicians through IoT sensors.
- Real-time view of service technician location and availability.
- Provides real-time information and alerts on equipment in the fleet.
- Raises warnings for anticipated part replacements through predictive analytics.
- Integrates with SAP systems to support the creation of transactional data.

Technologies in Use

- SAP Cloud Platform
- SAP Leonardo IoT Services
- SAP Leonardo Predictive Analytics



[Click here](#) to watch the video.