



Accenture Strategy

EX factor

Reimagining the employee experience
through the operating model



About the authors



Shammak Banerjee

Managing Director,
Accenture Strategy, Talent &
Organization/Human Potential

Shammak specializes in diverse aspects of Talent and Organization including operating model leadership development, talent management, workforce transformation, and growth strategies. Shammak is based in Cincinnati.



Aneel Delawalla

Managing Director,
Accenture Strategy,
CFO & Enterprise Value

Aneel works with management teams and the boards of directors of publicly traded and privately held companies to create enterprise value at the intersection of growth strategies, operating model transformation, and employee experience. Aneel is based in Atlanta.



Paul Jeruchimowitz

Managing Director,
Accenture Strategy, Intelligent
Operating Model and Zero-Based
Organization Global Lead

Paul helps organizations design and implement large-scale integrated operating model and business services transformation programs. He has strategized, designed, built, implemented and optimized services organizations and operating models across many functional areas, including finance, HR, IT, supply chain, sales and marketing, and others. Paul is based in New York.



Kent McMillan

Managing Director, Accenture Strategy,
Global Lead, Organizational
Development and Europe Lead,
Intelligent Operating Model

Kent works with executives to drive growth through enterprise wide business transformation programs. His focus is helping clients develop operating model and people strategies to drive enhanced customer experiences and more efficient operations in the digital age. Kent is based in London.

Employee expectations about how they work are not changing. They *have* changed.

As companies adapt to the massive disruption of COVID-19, they must move quickly to redefine workforce strategies, re-engage employees and reimagine the employee experience (EX).

Employee engagement has taken a significant hit over the past few months, dropping to an all-time low with 54 percent of employees “disengaged” and 14 percent “actively disengaged,” according to a recent Gallup poll.¹

While the pandemic may have flooded the market with a surplus of talent, there remains a shortage of the most desired skills, forcing companies to reassess their employee value propositions to stay relevant.

Organizations that focus on building their “EX Factor” will attract, develop and retain top talent while reducing cost to serve and enhancing operational agility. Achieving these outcomes requires a pivot to a new, employee-centric operating model, one that re-orientes teams around what matters most to employees and delivers differentiated experiences to maximize engagement and build trust. It is an approach that is good for employees and for business as companies that craft a differentiated EX at scale outperform their rivals in earnings.

Employees as customers

The winners on this new playing field are companies that treat employees like customers, infusing a sense of purpose into the experience. Seventy-six percent of executives agree that organizations need to dramatically re-engineer the experiences that bring people and technology together in a more human-centric manner.² Co-creating experiences with employees based on their increasingly liquid expectations completes the EX play and creates a greater sense of brand loyalty within the workforce. Eighty one percent of HR leaders have already rolled out or are piloting various technologies to improve the employee experience.³ Those that successfully activate a purpose-led EX create a community of valuable brand stakeholders all working together to shape the next era of engagement and competitiveness.

The pandemic has pushed companies to rethink ways of working and become hypersensitive to the personal and professional needs of its current and future employees. This has accelerated the next generation of business offerings: enterprises are becoming collaborative partners in experience creation—not just providers of it—ultimately transforming their relationships with customers and employees.

The value is significant, quantified not only by traditional metrics like employee retention and net promoter score, but also by customer effort score (CES), which serves to calculate the collective ROI of positive micro-experiences provided across the organization.⁴

One global retailer took a product development approach to enhancing the employee experience. They started with redesigning their employee discount program, one of the most highly valued employee benefits. They introduced a new digital program that enabled associates to review and apply discounts on their device while at the register so they could see how much they were saving in real time. They also could earn additional discounts based on performance, anniversaries, etc. The goal: drive loyalty and retention by focusing on what employees value most at a time when the cost and volatility of hiring had never been higher.



Disrupt to deliver

Of course, treating employees like customers to deliver high-value experiences is easier said than done. It is difficult to provide differentiated EX when skills or tools exist outside of single functions. Ninety-three percent of companies note their very existence is jeopardized by operating models that can't keep pace.⁵ COVID-19 has accelerated the need to self-disrupt and reorient teams to be more flexible and resilient, leveraging an expanded talent and technology ecosystem. By reimagining HR, finance, IT, and Global Business Services (GBS) into employee services, companies eliminate functional silos and reset cost structures to self-fund and deliver EX at scale.

One example: it can be difficult to create a delightful experience for onboarding if the onus is on the new employee to navigate Disrupt to deliver through corporate silos and coordinate disparate touch points.

An EX-based approach puts the employee outcome at the center of the model and empowers teams to create solutions that deliver it in a way that delights the employee and lowers the company's cost to serve. Like with customers, the employee has primacy and teams are organized around the outcomes they value the most. It is what one global beverage company decided to do: break through silos and organize their operating model around six employee services, such as "Joiner," where the entire onboarding process was enhanced. Also "Growth," where employees could access relevant learning experiences on the go. Each service was led by a global experience owner empowered to reimagine the people, processes and tools required to deliver the desired employee outcomes.

Organize around outcomes—not functions

“ I have a professional need...
I am joining a new company

New Joiner Onboarding is an opportunity
to create a signature experience

“ I have a professional request...
I have a new employee joining
into my group



End-to-end services across functions

HR

Orientation
Transfer
Address change
Tax change
Benefits change
Payroll set up
Relocation

Finance

Cost center mapping
Signing authority
Expense management

Procurement

Contingent labor vendor

IT

Security profile/role
Authority levels
New system access

Facilities

Building access
Security card
Cube/office
Supplies
System access
Parking space
Health & safety

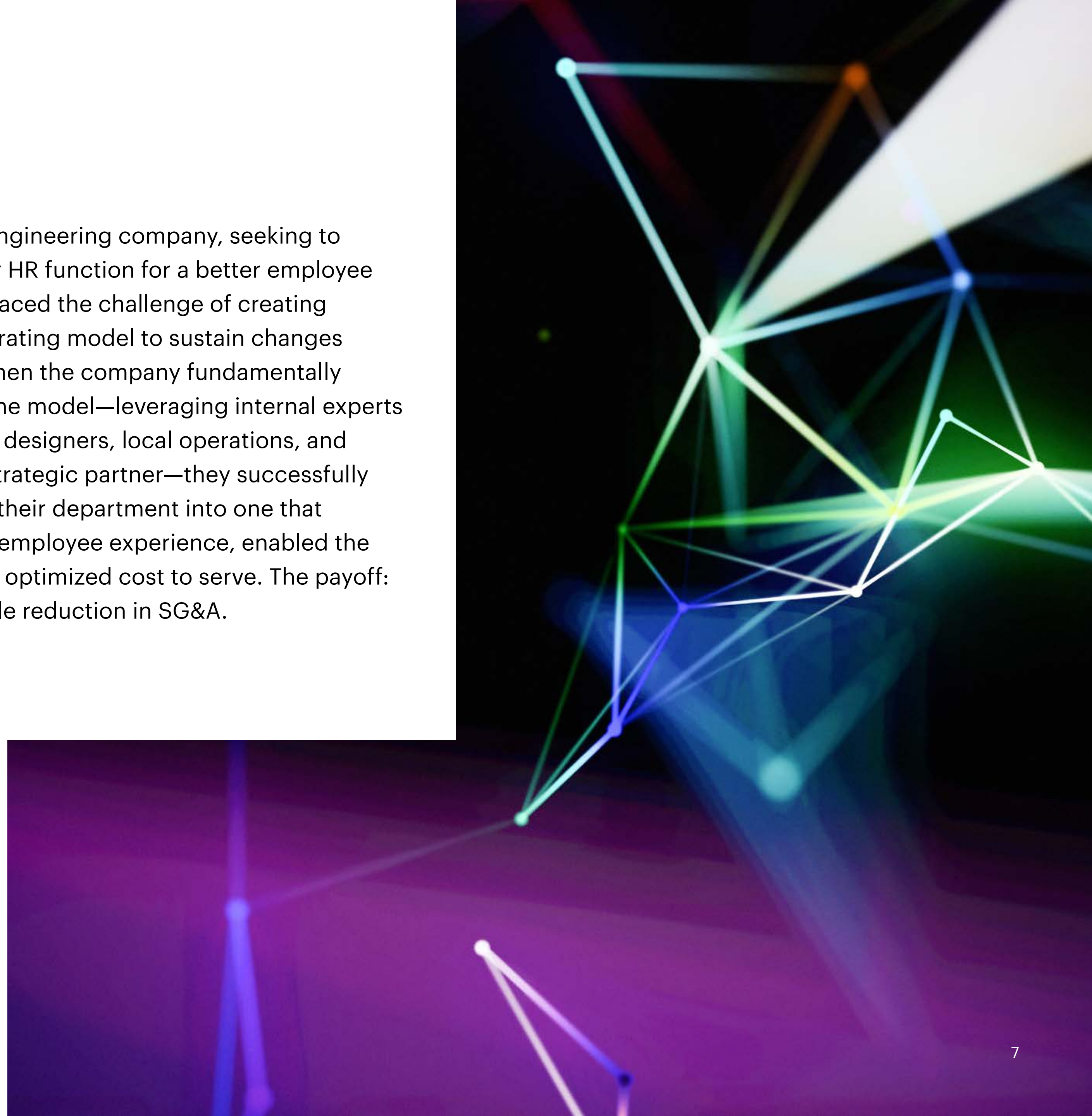
Stores

Orientation
Uniforms
Workplace schedule
Store discounts

More EX for less

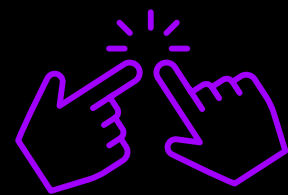
Developing new, highly valued employee experiences does not necessarily require more investment. One way to get more EX for less is to leverage the organization's existing GBS organization to accelerate speed to value when it comes to crafting employee experiences at scale. GBS creates the agility needed to adapt to shifting needs for both employee and employer, repositioning the functional teams and experts (sourced from liquid talent pools within and outside of the organization) to leverage tools (automated onboarding, digital assistants, employee and manager self-service) that drive greater user experience, workforce productivity, and issue resolution. And consider this: as technology ecosystems mature, automation and artificial intelligence initiatives scale operational cost benefits by up to 30 percent and improve time-to-market from 3x to 10x.⁶

One global engineering company, seeking to reinvent their HR function for a better employee experience, faced the challenge of creating the right operating model to sustain changes over time. When the company fundamentally redesigned the model—leveraging internal experts and program designers, local operations, and an external strategic partner—they successfully transformed their department into one that elevated the employee experience, enabled the business and optimized cost to serve. The payoff: a considerable reduction in SG&A.



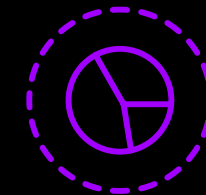
Putting EX in the operating model

Winning the war on talent means pumping up your EX factor. Here are three ways to start:



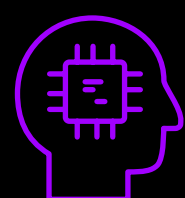
Co-create the experience

Customers are regularly engaged to enrich or redefine their desired experiences. Companies must do the same with employees. Instead of telling employees what they value, functions need to invest in co-creating the experiences and outcomes. Consider three lenses to orient the approach: human, physical and digital. Form design-thinking pods to rapidly—think days or weeks, not months—ideate, define, develop, test and deploy solutions that enhance the employee’s sense of belonging, collaboration, flexibility and value. One way to focus EX is to craft personas that exist in the organization or are anticipated in the future. What do employees value? How could a differentiated experience drive engagement? Create affinity that impacts retention? Or attract candidates to the company in the first place?



Reimagine the model

Companies can no longer rely on just traditional levers, including compensation, attractive benefit packages or in-person training to engender loyalty and drive retention although they are still relevant. Reimagining the employee experience means more than orienting around employee services. To truly bring the operating model to life, single owners must be established and made accountable for all of the people, processes, experiences and tools delivered by multi-disciplinary teams to achieve the desired outcomes. And once that construct has been implemented—accelerated by an existing GBS infrastructure—it must be measured by a combination of traditional key performance indicators, or KPIs, such as workforce productivity, time to proficiency, retention or employee net promoter score. They should also be measured by new key experience indicators, or KEIs, such as customer effort score, service provider NPS, collaboration analytics and sentiment analysis through voice/chat/email interactions. Doing so will also sharpen the focus of the organization’s corporate functions, enabling a pivot towards strategy, policy and insights, and away from lower value work.



Empower humans + machines

To deliver the new model at scale and address variable workforce or business needs, companies need to exploit the power of human + machine. Expanding the ecosystem—through a curated network of strategic partners, adaptive or liquid talent pools—can accelerate this evolution and unlock new sources of value through innovation. Seventy-six percent of business leaders agree that current models will be unrecognizable in the next five years.⁷ Ecosystems will be the main change agent. Digitizing the enterprise becomes a major enabler, ensuring the new model maximizes not only process efficiencies and business insights, but creates leverage for higher touch “concierge” services related to parental leave, mobility, and performance management. And companies shouldn’t just look outside for critical skills. They should reskill the workers they have using an emerging set of partners and tools. Forty-three percent of executives surveyed by Accenture anticipate that in the next three years more than 60 percent of their workforce will move into new roles requiring substantial reskilling due to the impact of technology.⁸



The ROI of EX

When all is said and done, boosting the employee experience isn't just about attraction and retention. Although for star performers, those are more important than ever. EX is all about ROI. Companies with highly engaged workforces see a measurable bottom-line impact, significantly outperforming their peers and making their organizations stand out during a time of disruption.



Contact the authors to explore ways to unlock your organization's full potential and reimagine the employee experience.

[Get in touch](#)

References

- 1 [Historic Drop in Employee Engagement Follows Record Rise](#), Gallup, July 2020.
- 2 [Accenture Technology Vision, 2020](#).
- 3 [Employee Experience Reimagined](#), Accenture, 2017.
- 4 [Accenture Technology Vision, 2020](#).
- 5 [Building the Intelligent Enterprise: Learning from COVID-19 to Create Lasting Agility and Resiliency](#), Accenture, 2020.
- 6 [Making IT Work: Developing the Future IT Workforce](#), Accenture, 2018.
- 7 [Cornerstone of Future Growth, Ecosystems](#), Accenture, 2018.
- 8 [New Workforce Skilling for Innovation and Growth](#), Accenture, 2019.

Contributor

Nicholas Bobich

Senior Manager, Accenture Strategy

This document refers to marks owned by third parties. All such third-party marks are the property of their respective owners. No sponsorship, endorsement or approval of this content by the owners of such marks is intended, expressed or implied. This content is provided for general information purposes and is not intended to be used in place of consultation with our professional advisors.

Copyright © 2021 Accenture. All rights reserved.
Accenture and its logo are trademarks of Accenture.

About Accenture

Accenture is a global professional services company with leading capabilities in digital, cloud and security. Combining unmatched experience and specialized skills across more than 40 industries, we offer Strategy and Consulting, Interactive, Technology and Operations services—all powered by the world’s largest network of Advanced Technology and Intelligent Operations centers. Our 569,000 people deliver on the promise of technology and human ingenuity every day, serving clients in more than 120 countries. We embrace the power of change to create value and shared success for our clients, people, shareholders, partners and communities.

Visit us at www.accenture.com.

About Accenture Strategy

Accenture Accenture Strategy works with boards, CEOs and C-suite executives to create 360° value for all stakeholders by defining and answering their most strategic business questions—including growth, profitability, technology-driven transformation, mergers and acquisitions (M&A), operating models and sustainability—with insights from AI and data science, combined with deep industry and function expertise.

For more information, follow [@AccentureStrat](https://twitter.com/AccentureStrat) or visit www.accenture.com/strategy.

Join the conversation

[@AccentureStrat](https://twitter.com/AccentureStrat)

www.linkedin.com/company/accenture-strategy